

COUNCIL TAX 2022/23

NO
ONE
LEFT
BEHIND



We have confirmed our budget for this next financial year and it's important to show you what your Council Tax pays for, and why. Surrey's ultimate ambition is that no one is left behind. That means helping those who need us most and improving quality of life for everyone. We commit to you that every penny of your Council Tax is spent on this ambition, making Surrey a better place.

Tim Oliver, Leader of Surrey County Council



The average Band D Council Tax per year is £1626.39, here's how your money is spent:

£627.43

ADULT SOCIAL CARE

Looking after people with disabilities, complex needs, and as they get older.



£392.59

CHILDREN, FAMILIES AND LIFELONG LEARNING

Giving children and families the best possible start in life, with care and education.

£220.48

ENVIRONMENT, TRANSPORT AND INFRASTRUCTURE

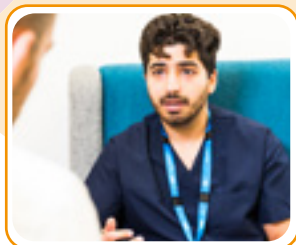
Improving roads, public transport, countryside, waste, and tackling the climate emergency.



£53.52

PUBLIC SERVICE REFORM AND PUBLIC HEALTH

Helping people live healthy lives and keeping them safe and well, with NHS partners.



£17.48

CUSTOMER AND COMMUNITIES

Talking with residents and helping local communities thrive through grants and support.

£2.50

PROSPERITY, PARTNERSHIPS AND GROWTH

Providing the best conditions for Surrey's economy to grow.

£62.26

COMMUNITY PROTECTION GROUP

Includes Surrey Fire & Rescue Service. Protecting residents and businesses.



£10.45

PEOPLE AND CHANGE

Supporting our workforce.

£2.97

COMMUNICATIONS, ENGAGEMENT & PUBLIC AFFAIRS

Making sure residents are informed, and heard.

£109.54

RESOURCES

Keeping services running smoothly.

£127.17

CENTRAL INCOME AND EXPENDITURE

Repayments on investment borrowing, and our transformation plans.

**For illustrative purposes, this represents the total budget split by the Band D council tax value. Some areas are funded by specific restricted grants, which are not reflected here.*

This year we have taken the necessary decision to raise Council Tax by 4.99%. We know that this may be difficult and we will actively support those who need financial help.

This is equivalent of £1.48 per week for an average Band D Council Tax bill, and will be spent on:
0.99% (29p) on the increased cost of delivering services
3% (89p) towards delivering social care
1% (30p) on extra investment in mental health services

INVESTING IN SURREY'S FUTURE

As well as day-to-day spending on services (see overleaf), we have also set out what we will invest in Surrey over the next five years. Below is a summary of where that investment will be spent, to help those who need us most and improve quality of life for everyone.



SEND

£125m

on Special Educational Needs and Disabilities provision – more specialist places, closer to people's homes

£327m

on improving highways and maintaining structures like bridges



£129m

on Care and Support – more appropriate, modern facilities for people who need support



£221m

on schools – more places and improved facilities

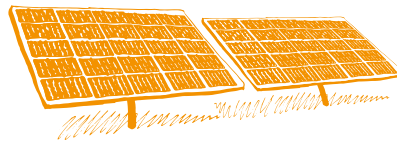


£34m

on Looked After Children – new and improved accommodation for children in care

£237m

on big infrastructure projects – rethinking town centres to improve local areas



£210m

on measures to reach net-zero by 2030 and tackle the Climate Emergency – including cleaner transport, energy and buildings

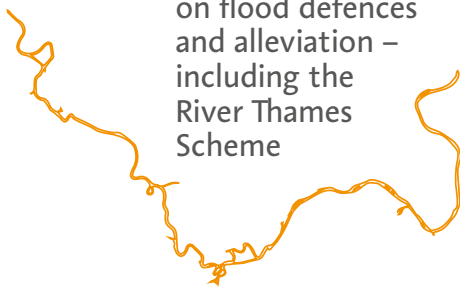


£100m

on Your Fund Surrey – making community-led ideas a reality

£122m

on flood defences and alleviation – including the River Thames Scheme



£34m

on libraries – transforming libraries to be the centre of the community



For more information about our budget and Council Tax, please visit surreycc.gov.uk/yourmoney

If you would like this information in Easy Read version, large print, Braille, in audio or in another language or format, please contact us on:

Tel: 03456 009 009 Email: contactcentre@surreycc.gov.uk

Textphone (via Text Relay): 18001 03456 009 009 SMS: 07860 053465