

Bin collections and recycling guide 2026



Recycling bin

Clean and dry recycling, collected fortnightly



Dry paper and cardboard



Metal tins and cans



Plastic pots, tubs and trays



Plastic bottles



Empty aerosols



Glass bottles and jars

**No
thanks**



Batteries and vapes



Black bags



Food waste

Rubbish bin

Collected fortnightly



Black bags



Nappies



Crisp packets



Coffee cups



Food pouches



Hard plastics

**No
thanks**



Gas canisters



Batteries



Garden waste

If you would like more information about how to
'Bin it better' visit
www.guildford.gov.uk/whatgoesinmybins



Food waste

Collected weekly from your separate food waste bin

**Yes
please**



Teabags



Eggshells



Meat



All food

**No
thanks**



Liquids

Remember, you can use any bag except black bin bags to line your caddy, including carrier bags, vegetable bags or pedal bin liners.

Garden waste

Collected fortnightly from your separate garden waste bin and can be recycled at community recycling centres

**Yes
please**



Cut flowers



Fallen leaves



Prunings



Grass cuttings

**No
thanks**



Soil and stones

Remember, to subscribe to the garden waste collection service or to find out more about composting at home, visit www.guildford.gov.uk/gardenwaste.

Missed collection?

If your bin hasn't been emptied, please report it at www.guildford.gov.uk/missedbins within two working days. We aim to return within two working days of the report.

This document constitutes a Section 46 Notice under the Environmental Protection Act 1990.

Textiles Collected weekly. These can also be recycled at community recycling centres.

Yes please



Bags and belts



Paired shoes



Underwear



Clothes

No thanks



Pillows and duvets

Remember, items must be clean, dry and in no more than one small, tied carrier bag placed next to your bin.

Small electricals Collected weekly. These can also be recycled at community recycling centres

Yes please



Vapes



Anything with a plug



Anything battery-operated



Batteries in a separate bag

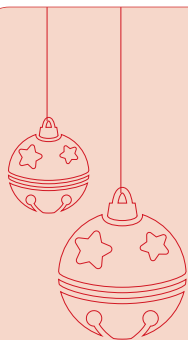
No thanks



Lightbulbs

Remember, items must be in no more than one small, tied carrier bag and placed next to your bin. We are unable to collect larger items such as TVs, microwaves or fridges.

- You must put your containers out on your property boundary, or where instructed, by 6:30am on your collection day
- Always take your bin back onto your property as soon as possible
- Bins weighing over 50kg will not be emptied
- Gas canisters can be recycled at community recycling centers



Christmas collections 2025

Collection dates over the Christmas and new year period will change as shown.

Garden waste service pause

There will be no garden waste collection for two weeks from **Monday 29 December to Friday 9 January.**

Usual collection day	Revised collection day
Monday 22 December	No change
Tuesday 23 December	No change
Wednesday 24 December	No change
Thursday 25 December	Monday 29 December
Friday 26 December	Tuesday 30 December
Monday 29 December	Wednesday 31 December
Tuesday 30 December	Friday 2 January
Wednesday 31 December	Saturday 3 January
Thursday 1 January	Monday 5 January
Friday 2 January	Tuesday 6 January
Monday 5 January	Wednesday 7 January
Tuesday 6 January	Thursday 8 January
Wednesday 7 January	Friday 9 January
Thursday 8 January	Saturday 10 January
Friday 9 January	Monday 12 January
Monday 12 January	Tuesday 13 January
Tuesday 13 January	Wednesday 14 January
Wednesday 14 January	Thursday 15 January
Thursday 15 January	Friday 16 January
Friday 16 January	Saturday 17 January

Find out more about

- Your local waste and recycling service
- Assisted collections
- Sharps collections
- Replacing your black rubbish or green recycling bin
- Any collection issues

Visit www.guildford.gov.uk/recycling or call 01483 505050.

For bulky waste collections visit www.furniturehelpline.co.uk or call 01420 489000

Recycle right

Only put recyclable items into your recycling bin, otherwise the whole lorry load could be rejected and not recycled.

Your bin collection calendar 2026

January

M	T	W	T	F
			1	2
5	6	7	8	9
12	13	14	15	16
19	20	21	22	23
26	27	28	29	30

February

M	T	W	T	F
2	3	4	5	6
9	10	11	12	13
16	17	18	19	20
23	24	25	26	27

March

M	T	W	T	F
2	3	4	5	6
9	10	11	12	13
16	17	18	19	20
23	24	25	26	27
30	31			

April

M	T	W	T	F
		1	2	3
6	7	8	9	10
13	14	15	16	17
20	21	22	23	24
27	28	29	30	

May

M	T	W	T	F
				1
4	5	6	7	8
11	12	13	14	15
18	19	20	21	22
25	26	27	28	29

June

M	T	W	T	F
1	2	3	4	5
8	9	10	11	12
15	16	17	18	19
22	23	24	25	26
29	30			

July

M	T	W	T	F
		1	2	3
6	7	8	9	10
13	14	15	16	17
20	21	22	23	24
27	28	29	30	31

August

M	T	W	T	F
3	4	5	6	7
10	11	12	13	14
17	18	19	20	21
24	25	26	27	28
31				

September

M	T	W	T	F
	1	2	3	4
7	8	9	10	11
14	15	16	17	18
21	22	23	24	25
28	29	30		

October

M	T	W	T	F
			1	2
5	6	7	8	9
12	13	14	15	16
19	20	21	22	23
26	27	28	29	30

November

M	T	W	T	F
2	3	4	5	6
9	10	11	12	13
16	17	18	19	20
23	24	25	26	27
30				

December

M	T	W	T	F
	1	2	3	4
7	8	9	10	11
14	15	16	17	18
21	22	23	24	25
28	29	30	31	

Recycling collection week

- Recycling bin
- Outside food waste bin
- Separate bags of textiles, small electricals and batteries

Rubbish collection week

- Rubbish bin
- Outside food waste bin
- No side waste
- Separate bags of textiles, small electricals and batteries

Check your collection day. Go to www.guildford.gov.uk/bincollectiondays to check your collection day. You can check your **garden waste** collections here too, if you subscribe to the service.