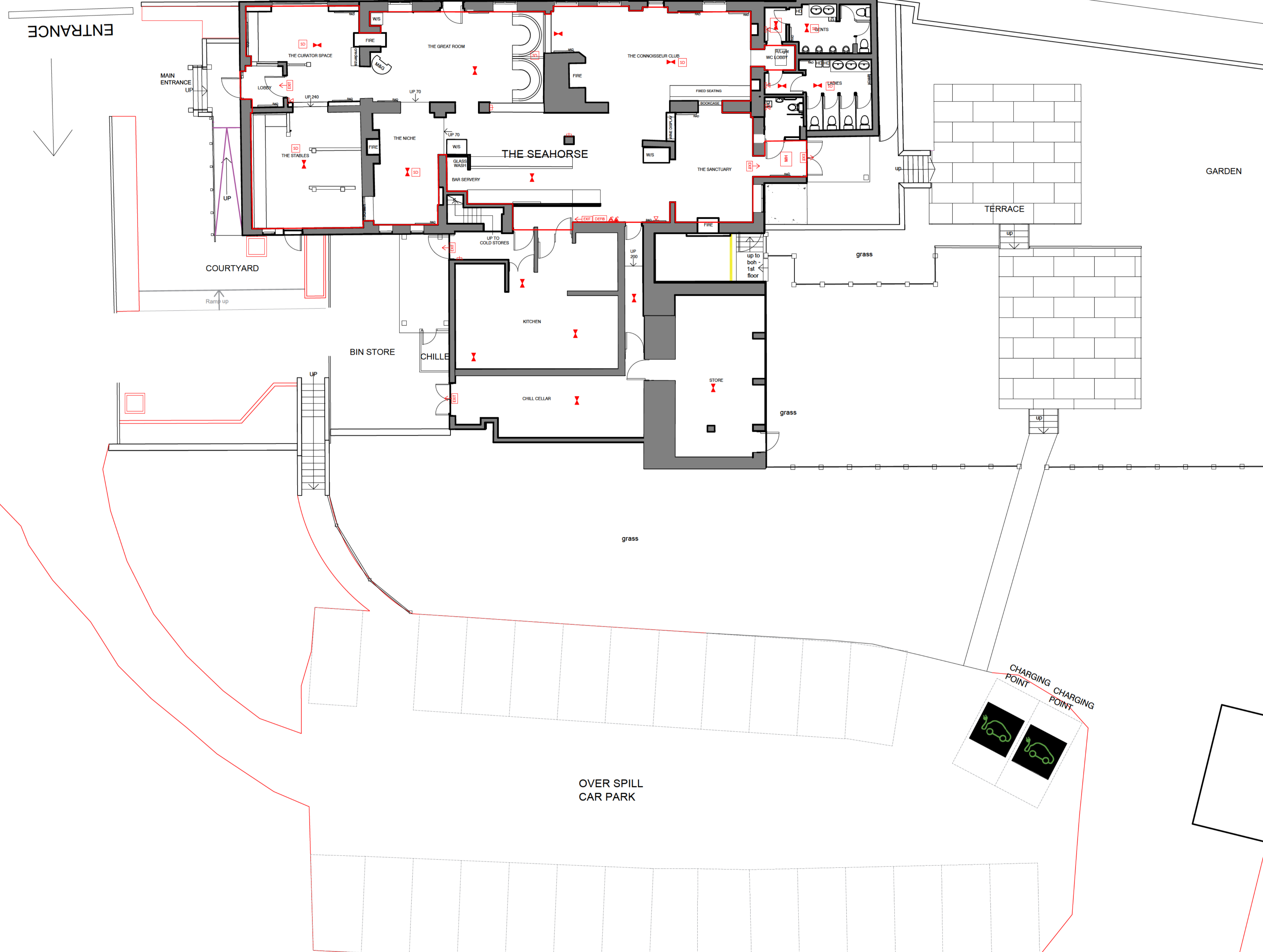
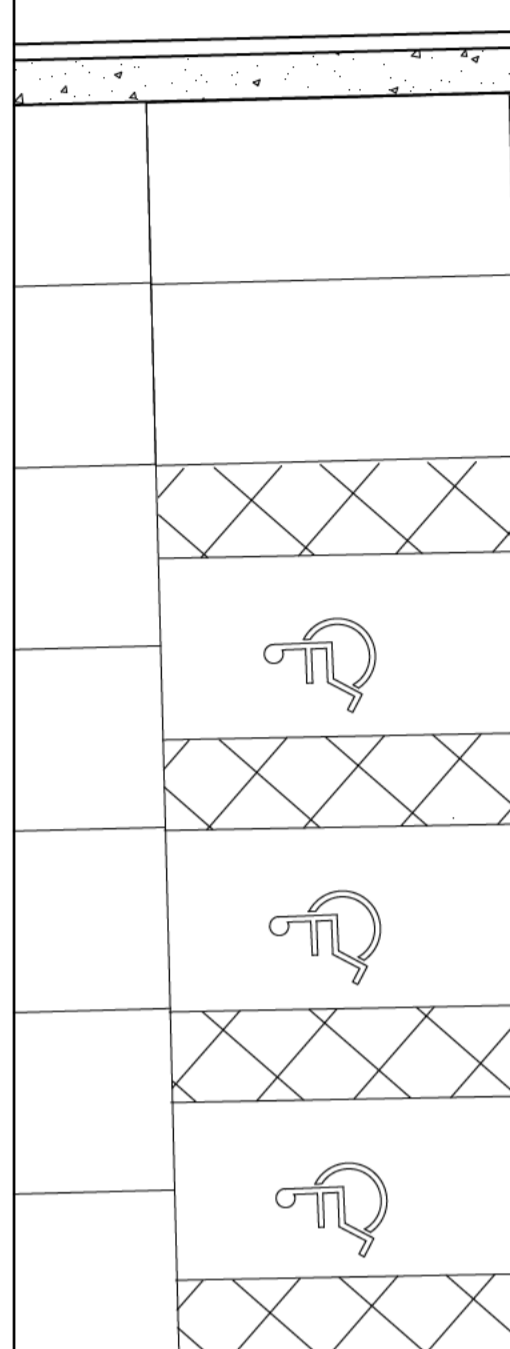


To Guildford

THE STREET (A 281)

To Shalford



- LIFE SAFETY EQUIPMENT**
- FIRE ALARM CALL POINT / BREAK GLASS CALL PULL
 - 9 LITRE WATER FIRE EXTINGUISHER
 - 2 KG CARBON DIOXIDE EXTINGUISHER
 - 9 LITRE FOAM FIRE EXTINGUISHER
 - AREA COVERED BY AUTOMATIC HEAT DETECTORS
 - AREA COVERED BY AUTOMATIC SMOKE DETECTORS
 - AREA COVERED BY EMERGENCY LIGHTING
 - ALARM SOUNDER
 - DIRECTIONAL EMERGENCY EXIT SIGN
 - FIRE ALARM PANEL
 - AREA FOR LICENSABLE ACTIVITIES
- ALL SYMBOLS ARE SHOWN TO INDICATE THAT AREA / ROOM SHOULD BE PROVIDED WITH THE RELEVANT FACILITY AND DO NOT NECESSARILY REPRESENT ACTUAL POSITIONS.
- THE OPERATORS RESERVE THE RIGHT TO AMEND THE LOCATION OF FIRE SAFETY EQUIPMENT SHOWN ON PLAN. EQUIPMENT MAY BE MOVED WITH THE AGREEMENT OF THE FIRE OFFICER OR AFTER FIRE RISK ASSESSMENTS.
- ITEMS SHOWN ON THIS PLAN WHICH ARE NOT REQUIRED BY THE PLANS REGULATIONS ARE FOR ILLUSTRATIVE PURPOSES ONLY AND DO NOT FORM PART OF THE LICENCE. THESE ITEMS MAY BE MOVED AT THE DISCRETION OF THE LICENCE HOLDER. THE CURRENT LOCATION OF THE FIRE SAFETY EQUIPMENT AND OTHER SAFETY EQUIPMENT IS AS SHOWN. THESE ITEMS MAY BE MOVED FROM TIME TO TIME WITH AGREEMENT OF THE FIRE OFFICER OR AFTER FIRE RISK ASSESSMENT.

C	DOOR & NOTE ADDED TO BOH	23/03/26	NP
B	RED LINE AMENDED IN LOBBY	12/03/26	NP
A	BAR/CUSHION BOX REMOVED TENDER ISSUE	02/03/26 20.02.26	HK HK

DO NOT SCALE. WRITTEN DIMENSIONS TO BE USED IN PREFERENCE TO SCALED DIMENSIONS. ALL DIMENSIONS TO BE CHECKED ON SITE BY CONTRACTOR & ALL DISCREPANCIES TO BE REPORTED TO JMDA

JOB TITLE
**MITCHELLS & BUTLERS
THE SEAHORSE
GUILDFORD, GU4 8BU**

DRAWING TITLE
LICENSING PLAN

DRAWING NUMBER	REVISION
JMDA_1860_04_001	C

SCALE	SHEET SIZE
1:100	A1

DATE	DRAWN BY	CHECKED BY
16.02.26		

JMDA
Interior Architecture Graphics

JMDA LTD
2 The Holmes Skipwith,
York, YO8 5SL
T:
info@jmdaltd.co.uk
www.jmdaltd.co.uk

Copyright © This drawing is the property of JMDA Ltd. All rights reserved.

00 - PROPOSED FLOOR PLAN
Scale: 1:100 @ A1

